

# top 20 highlights of Lake Macquarie

The beauty of Lake Macquarie is days spent exploring and discovering your favourite places around the Lake. There's so much to love about our beaches, Lake and mountains, so why not start here, with the top 20 popular destination highlights?

## 1 Catherine Hill Bay

A historic mining village and picturesque beach, great for swimming, surfing and snorkelling.

## 2 Wallarah National Park

A superb pocket of coastal bushland, hike to scenic lookouts and admire stunning ocean views.

## 3 Murrays Beach

Soak up the natural ambience of this eco-friendly community at the local café, or simply relax down by the Lake.

## 4 Caves Beach

Explore the sea caves and rock pools on a low tide at this popular family beach.

## 5 Blacksmiths Beach

Top swimming beach for families, protected by a breakwall that offers excellent fishing in Swansea Channel.

## 6 Pelican Foreshore Reserve

One of the area's most beloved picnic spots, features shady grassed expanses, BBQ's, a playground and jetty for fishing.

## 7 Fernleigh Track

Cycle or walk this restored heritage railway corridor and take in numerous different landscapes along the way.

## 8 Belmont Bay Foreshore

The place to watch the sunset. Have a meal and a drink at one of the waterfront sailing clubs or picnic in the park.

## 9 Green Point Foreshore Reserve

Beautiful bushland reserve. Enjoy extensive lake views from the easy walking trails.

## 10 Redhead Beach

Known for its photogenic red rocky headland and iconic shark tower, Redhead Beach is great for families and surfing.

## 11 Charlestown Square

The largest shopping centre in the Hunter Region, complete with plenty of dining and entertainment options.

## 12 Warners Bay

A lively lakeside town with boutique shopping, a huge range of eateries and foreshore area popular for picnics and post-meal strolls. Don't miss the nearby Redburn Boardwalk, an elevated path built out over the lake.

## 13 Speers Point Park

The city's flagship park, boasting the 'Best Play Space in Australia', the Lake Macquarie Variety Playground.

## 14 Lake Macquarie City Art Gallery

Set on extensive leafy grounds, browse the gallery's impressive collection of travelling and static exhibitions.

## 15 Toronto Foreshore

Dine out with the lake as a backdrop, admire the boats at the local marina or jump onboard a cruise from the Toronto jetty.

## 16 Rathmines Park

Formerly home to the largest seaplane base in the southern hemisphere during WWII, nowadays a serene spot to relax.

## 17 Wylangi Wylangi

A peaceful lakeside village home to Dobell House, the former residence and studio of renowned Australian artist Sir William Dobell.

## 18 Ullapool Mountains National Park

One of the best natural escapes in Lake Macquarie. Walking trails, picnic areas, lookouts, campgrounds and more.

## 19 Dora Creek

Tranquil waterway, perfect for kayaking or have a picnic and feed the ducks from the riverbanks.

## 20 Pulbah Island

Hire a boat, pack some lunch and make a day of exploring the Lake's largest island.



**WATER**  
Access. Contact 02 4971 3723.  
The closest airport is Newcastle Airport, located at 1 hour north of Lake Macquarie. From here, hire a car or catch a shuttle bus to Lake Macquarie. Contact 02 4928 9800 or visit [www.newcastleairport.com.au](http://www.newcastleairport.com.au).

**TRAIN**  
Lake Macquarie is regularly serviced by rail on the New South Wales Central Coast line. Major stations in Lake Macquarie include Wyee, Morisset, Fassfern and Cardiff. Contact 131 500 or visit [www.railinfo.com.au](http://www.railinfo.com.au). CountryLink trains stop at Fassfern station. Contact 13 22 32 or visit [www.countrylinkinfo.com.au](http://www.countrylinkinfo.com.au).

**BOAT**  
If arriving from the south, travel along the Sydney-Newcastle Freeway. For eastern Lake Macquarie, take the Doyalson, Swansea, Newcastle, Lake Macquarie, Morisset and Cardiff exits. If arriving from the north, follow the Pacific Highway into Belmont.

**TO GET TO LAKE MACQUARIE**  
On a lake twice the size of Sydney Harbour, there's plenty of room for everyone to enjoy their opportunities and water sports.

With over 60 towns and villages, fantastic surf breaks and pristine coastal forests of the Wategosa Mountains, Lake Macquarie is a beautiful natural beauty spot for everyone to enjoy their opportunities and water sports.

On a lake twice the size of Sydney Harbour, there's plenty of room for everyone to enjoy their opportunities and water sports.

With over 60 towns and villages, fantastic surf breaks and pristine coastal forests of the Wategosa Mountains, Lake Macquarie is a beautiful natural beauty spot for everyone to enjoy their opportunities and water sports.

On a lake twice the size of Sydney Harbour, there's plenty of room for everyone to enjoy their opportunities and water sports.

With over 60 towns and villages, fantastic surf breaks and pristine coastal forests of the Wategosa Mountains, Lake Macquarie is a beautiful natural beauty spot for everyone to enjoy their opportunities and water sports.

VISITORS MAP 2012

LAKE MACQUARIE CITY  
NEW SOUTH WALES



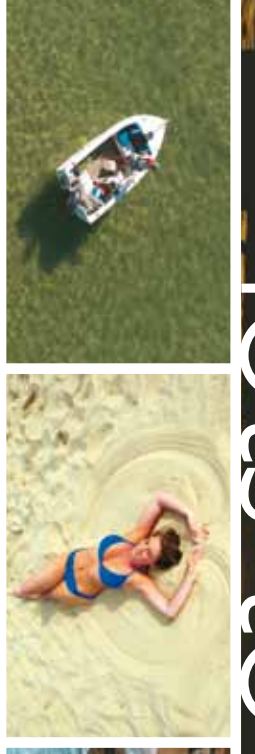
Lake Macquarie Visitor Information Centre

Swansea Centre,  
228 Pacific Highway,  
Swansea NSW 1573  
P: (02) 4971 0960 F: (02) 9972 1487  
Freecall 1800 802 044  
W: [www.visitlakemac.com.au](http://www.visitlakemac.com.au)  
E: [tourism@lakemac.nsw.gov.au](mailto:tourism@lakemac.nsw.gov.au)  
Book accommodation online at [www.visitlakemac.com.au](http://www.visitlakemac.com.au) or call 1800 802 044



LAKE MACQUARIE CITY  
NEW SOUTH WALES

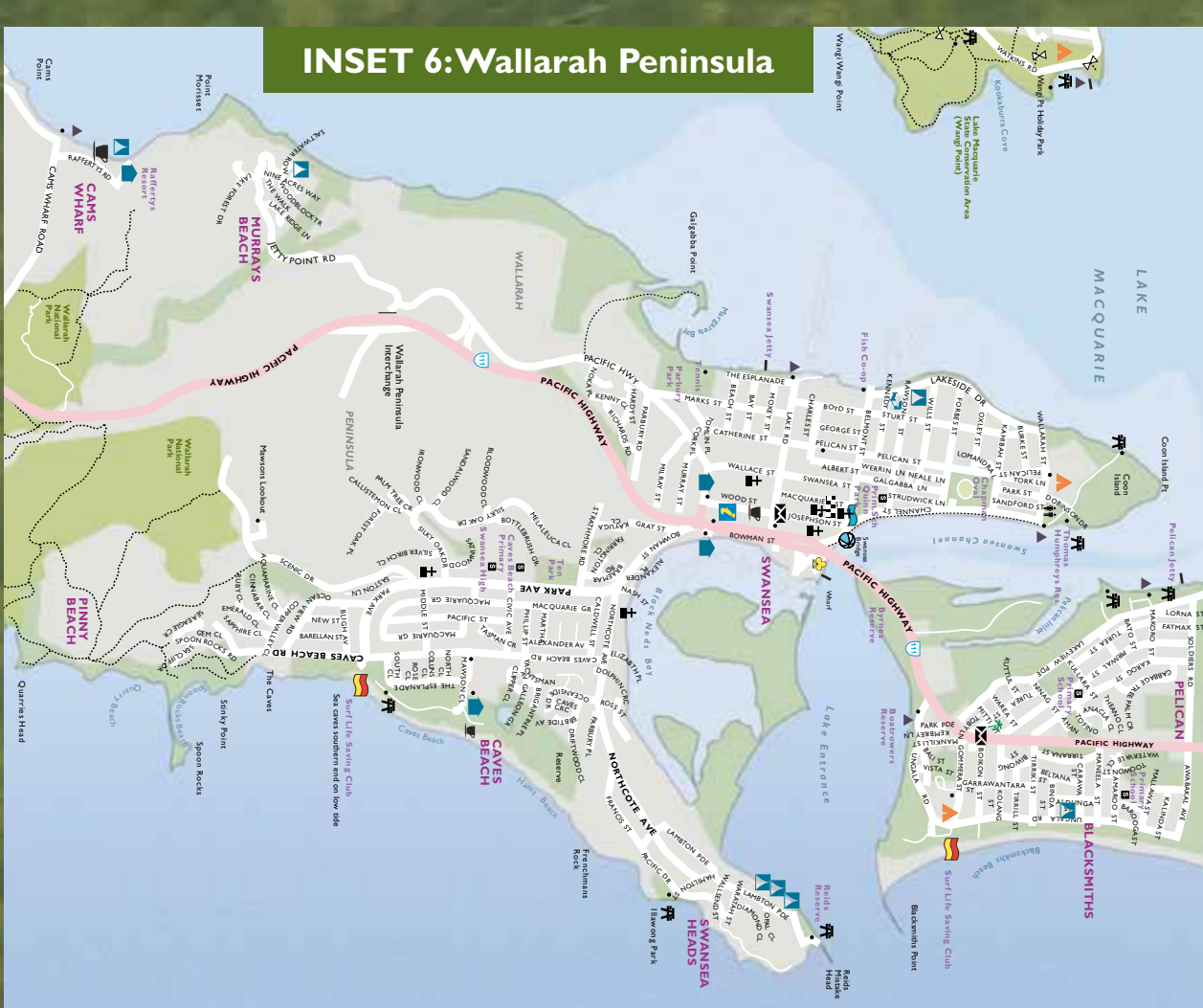
lots to love



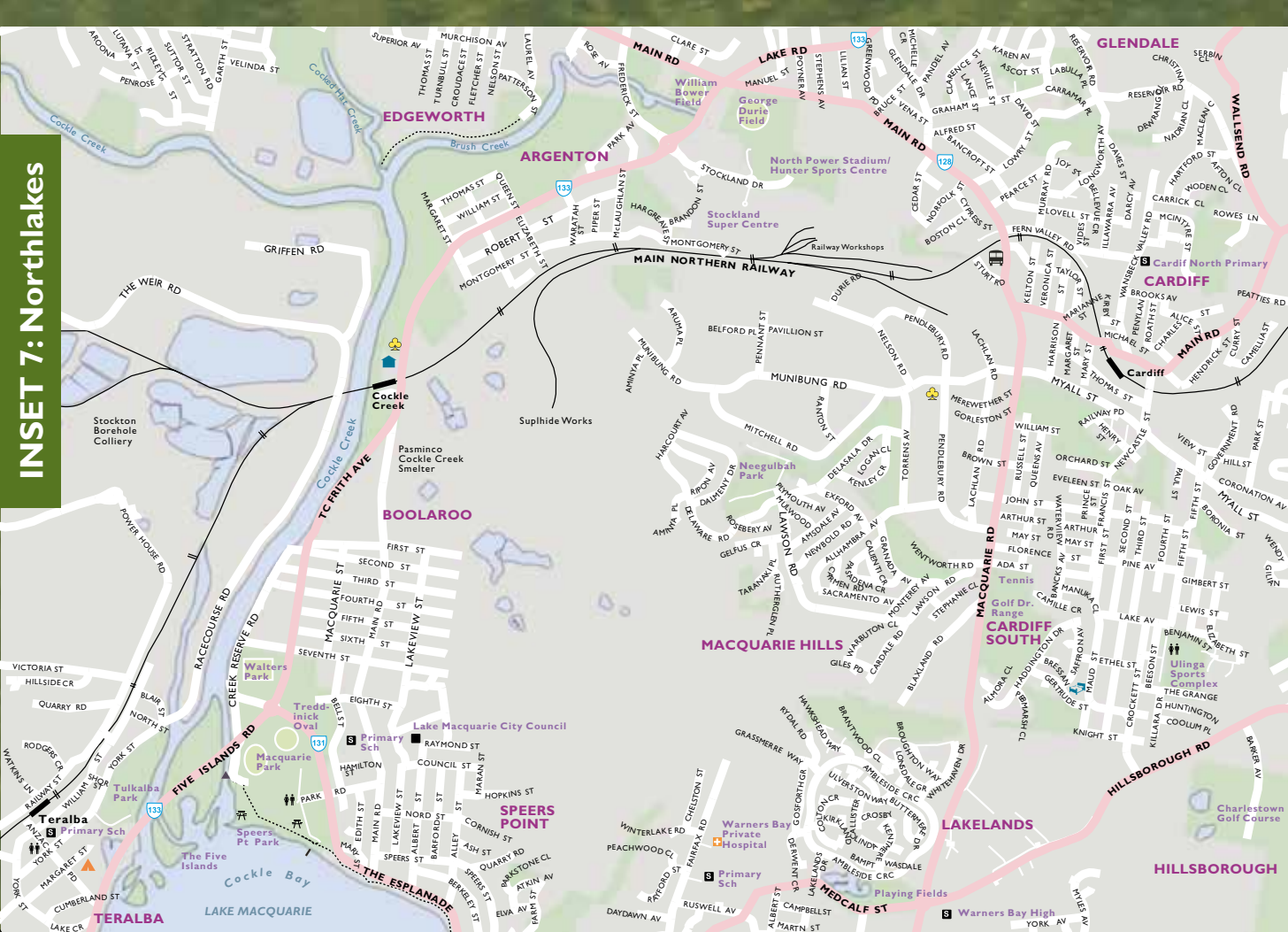
Love the Lake



## INSET 6: Wallarah Peninsula



## INSET 7: Northlakes



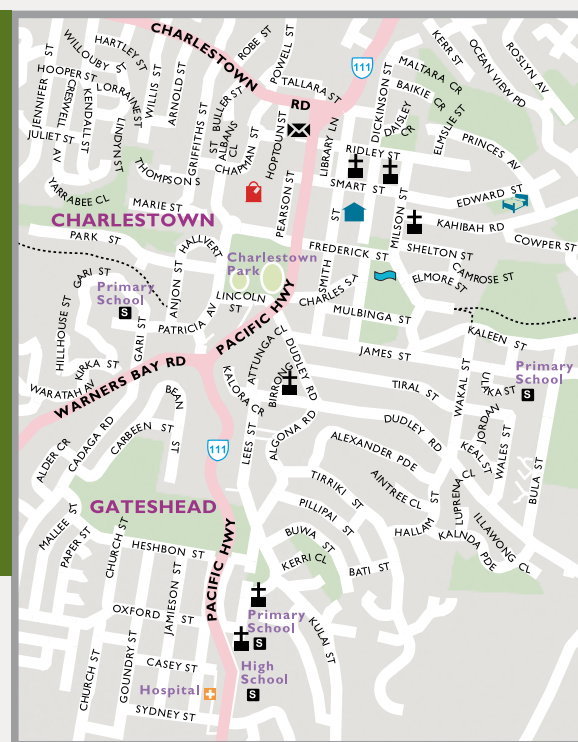
## Lake Macquarie Visitor Information Centre

Swansea Centre,  
228-234 Pacific Highway, Swansea NSW 2281  
P: (02) 4921 0740 F: (02) 4972 1487  
Free call: 1800 802 044  
W: [www.visitlakemac.com.au](http://www.visitlakemac.com.au)  
E: [tourism@lakemac.nsw.gov.au](mailto:tourism@lakemac.nsw.gov.au)

Book accommodation online at  
[www.visitlakemac.com.au](http://www.visitlakemac.com.au)  
or call 1800 802 044



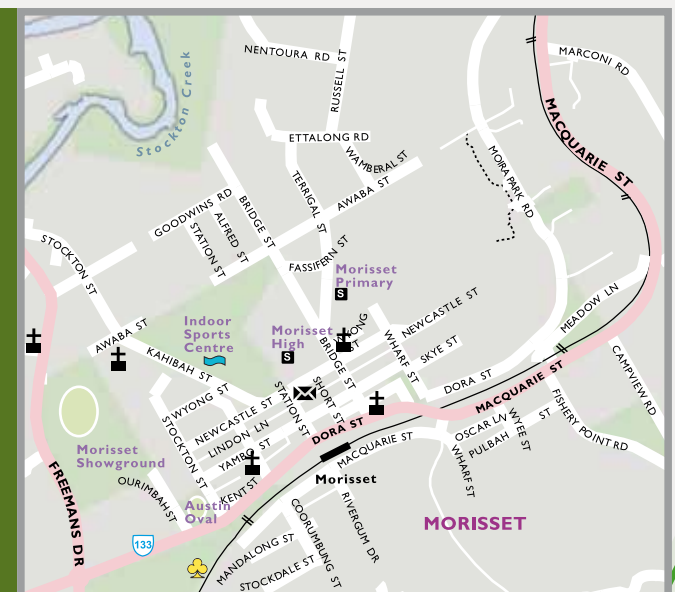
## INSET 1: Charlestown



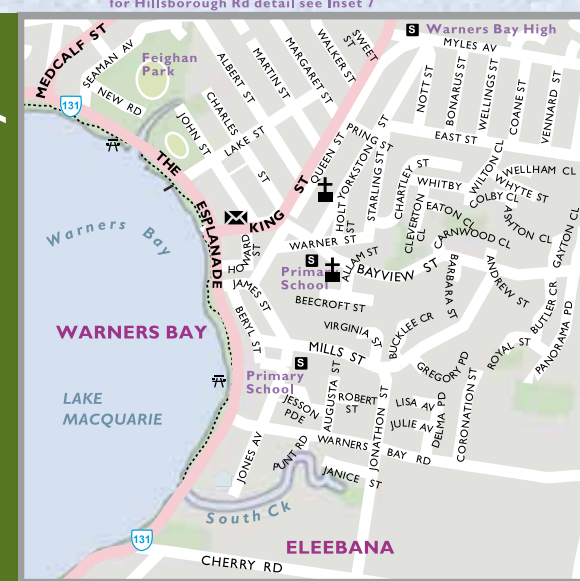
## INSET 2: Toronto



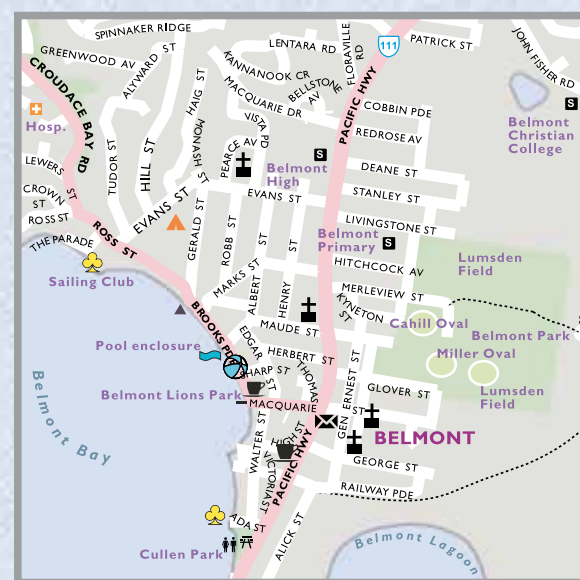
## INSET 3: Morisset



## INSET 4: Warners Bay



## INSET 5: Belmont



# Lake Macquarie

- National Park / State Conservation Area / Nature Reserve
- State forest
- Highway
- Major road
- Minor road
- Feature walking track
- Visitor information
- Hotel / motel / resort
- Tourist park
- B&B / guesthouse
- Backpackers and pubs/bars
- Cottages / houses / units
- Restaurants & cafes
- Attractions and activities
- Boat ramp
- Shopping
- Transport hire
- Water based activities
- Gallery / museum
- Patrolled beach
- Public baths
- Club
- Jetty
- Park facilities: lookout / picnic / camping

